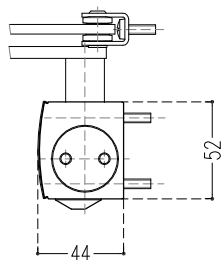


**MODELLO GEZE TS 1000 \_ braccio a compasso**

**1 Battente**

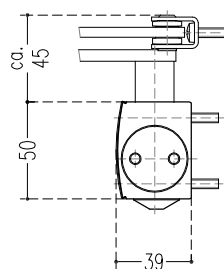


**EI 45  
EI 30 LINEA HOTEL  
EI 60 LINEA HOTEL**

**MODELLO GEZE TS 1500 \_ braccio a compasso**

- opzionale -

**1 Battente**

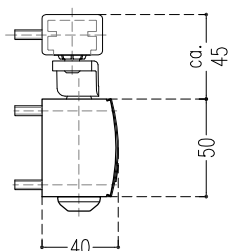


**EI 45  
EI 30 LINEA HOTEL  
EI 60 LINEA HOTEL**

**MODELLO GEZE TS 1500 \_ braccio a slitta**

- opzionale -

**1 Battente**



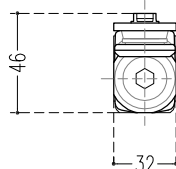
**EI 45  
EI 30 LINEA HOTEL  
EI 60 LINEA HOTEL**

**MODELLO GEZE BOXER**

(chiudiporta incassato per porte con anta a filo)

- opzionale -

**1 Battente**



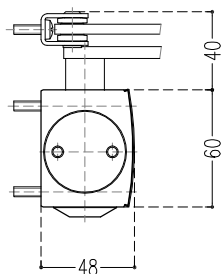
**EI 30 LINEA HOTEL  
EI 60 LINEA HOTEL**

**MODELLO GEZE TS 2000 \_ braccio a compasso**

(anche con braccio a slitta)

- opzionale -

**1 Battente  
L.P. ≤ 1000**



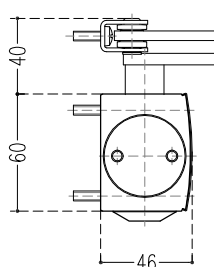
**REI 60  
EI 120**

**MODELLO GEZE TS 4000 \_ braccio a compasso**

(anche con braccio a slitta)

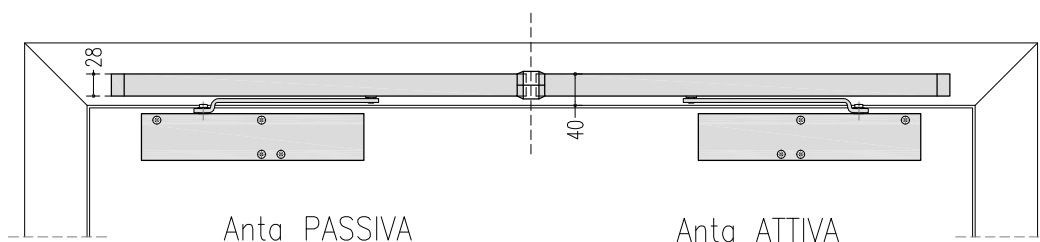
- opzionale -

**1 Battente  
L.P. > 1000**



**REI 60  
EI 120**

**MODELLO GEZE TS 3000 IS \_ braccio a slitta + GSR**



Anta PASSIVA  
per porte asimmetriche  
larghezza minima 300 mm

**REI 60  
EI 120**

**2 Battenti**

**CHIUDIPIORTA**

- NORMA UNI 18263 parte 2 -  
**DETTAGLI**

SETTEMBRE 2009

**F2**



SEBINO CHIUSURE Srl  
I - 24020 Scanzorosciate (BG)  
Via XXV Aprile, 21  
Tel. 035.24.27.10  
Fax 035.24.47.37  
www.sebinochiusure.it  
Info@sebinochiusure.it